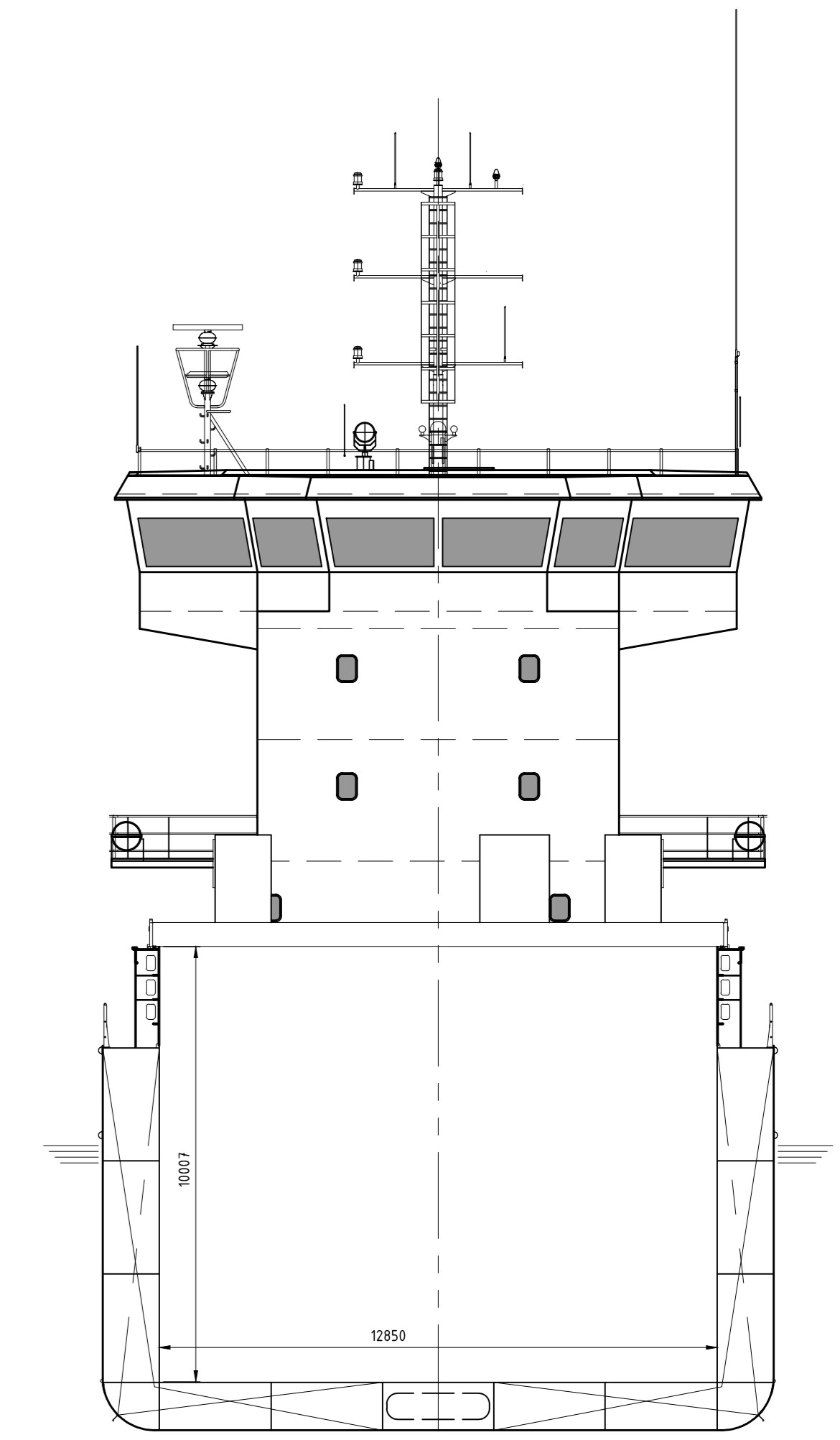
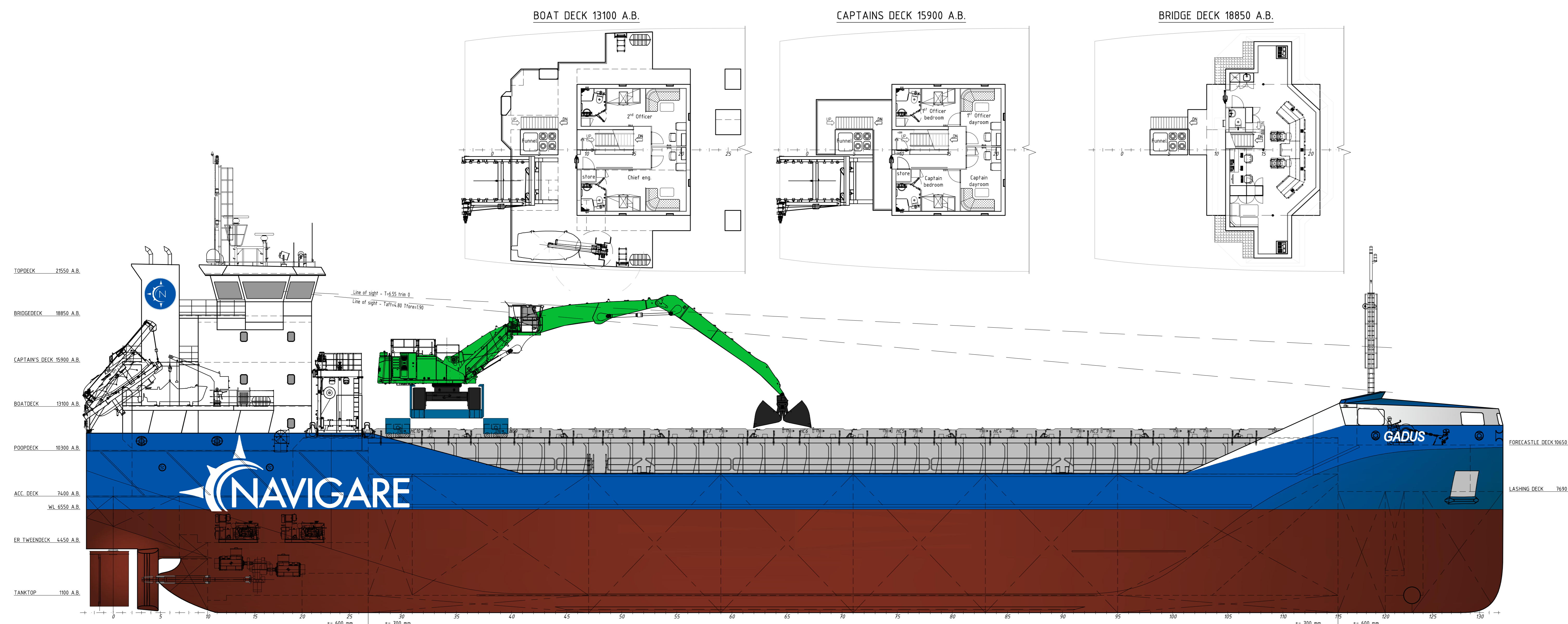
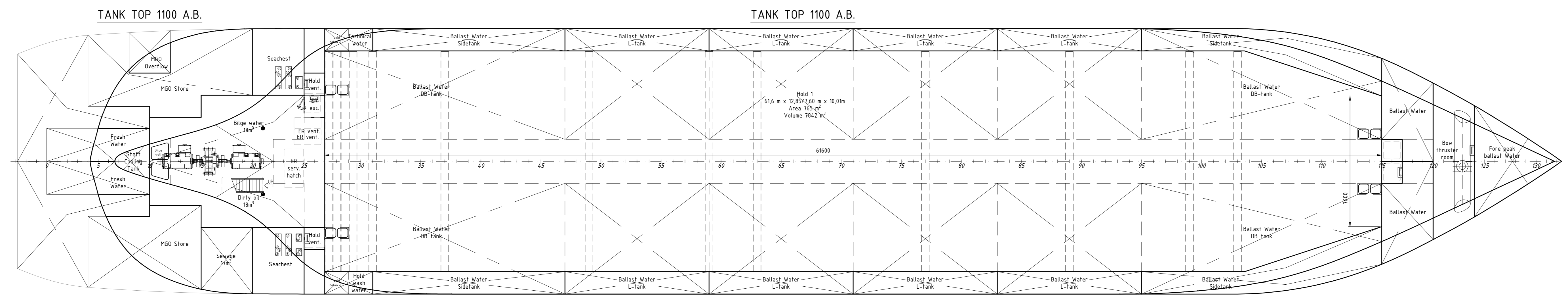
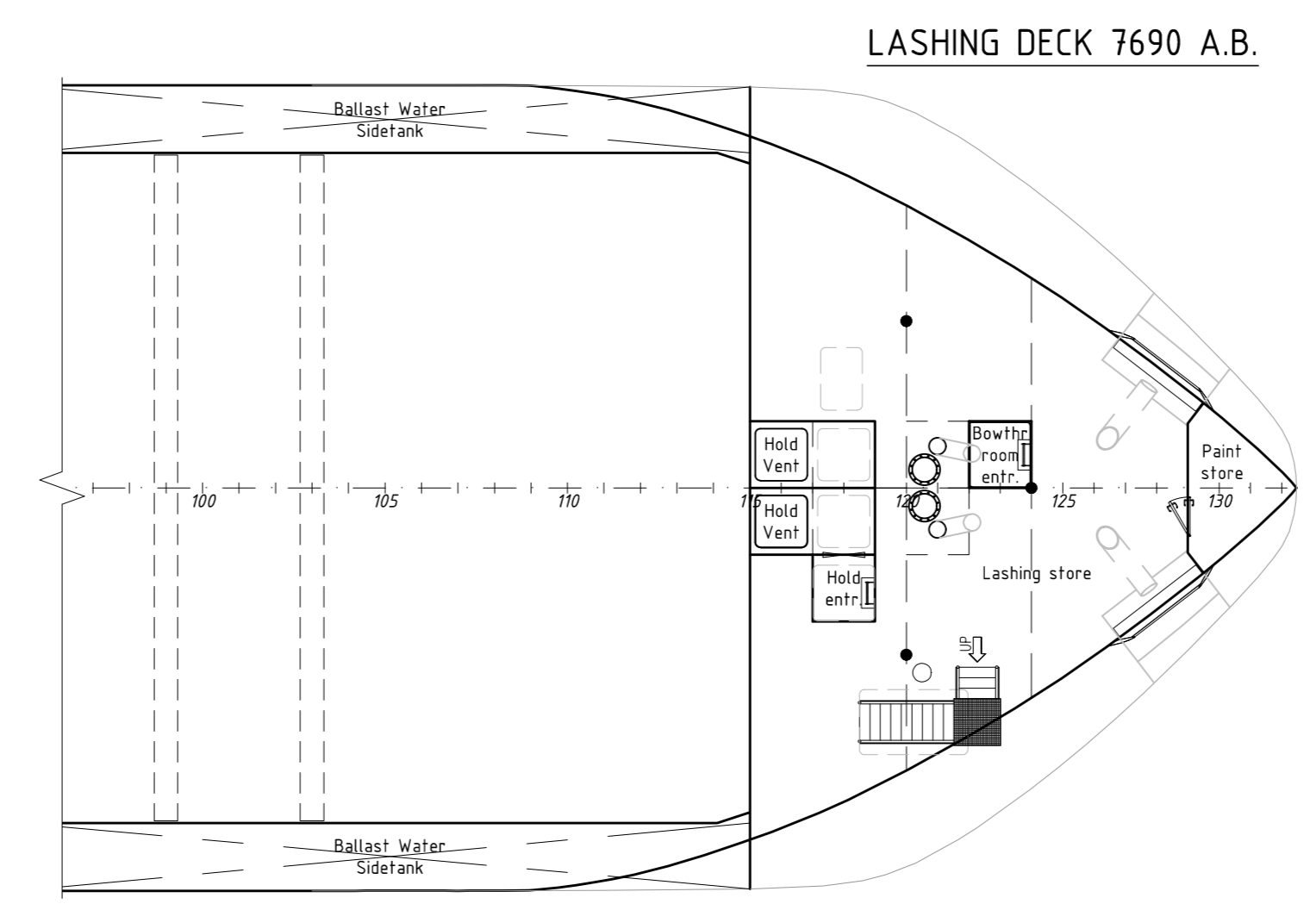
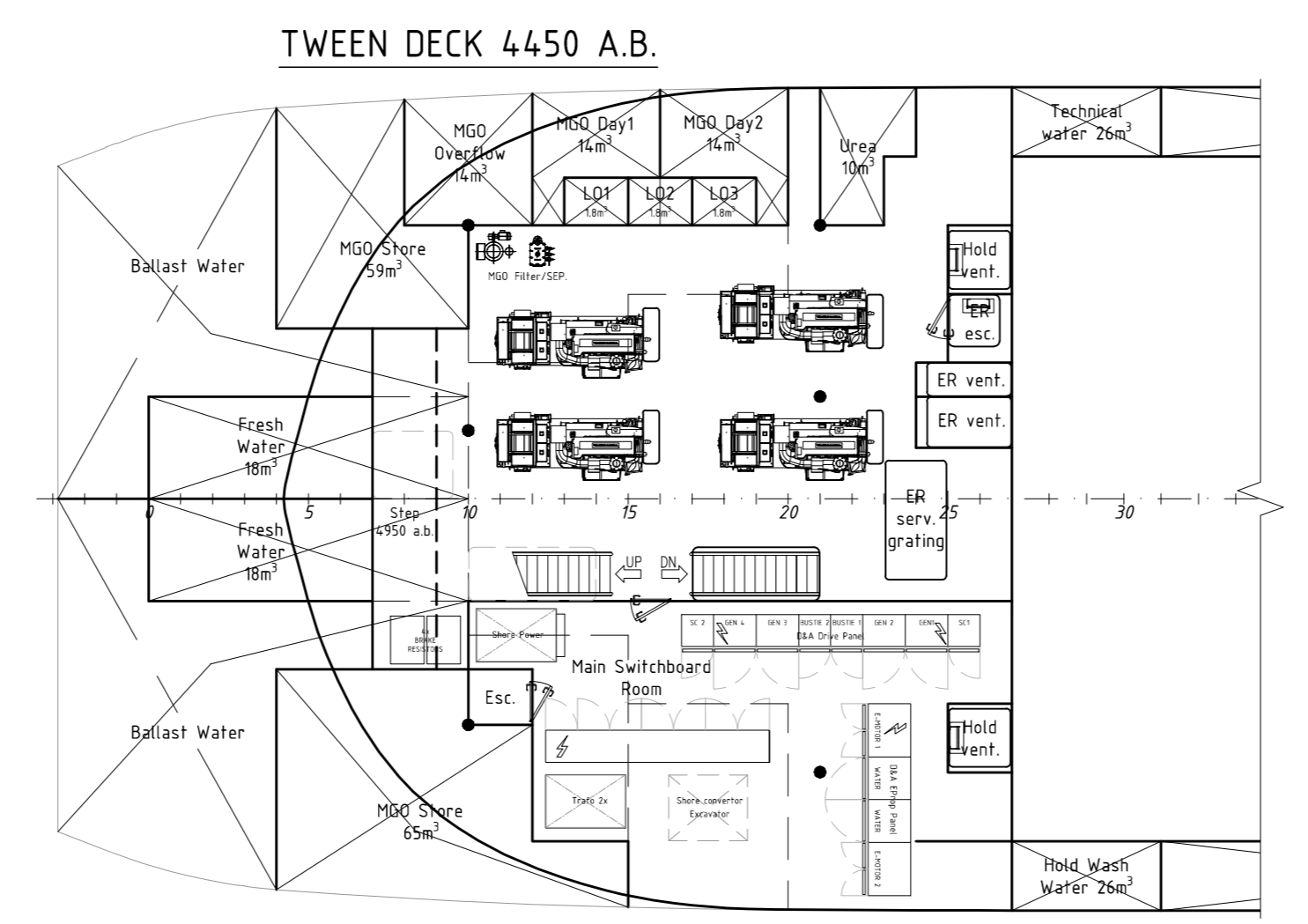
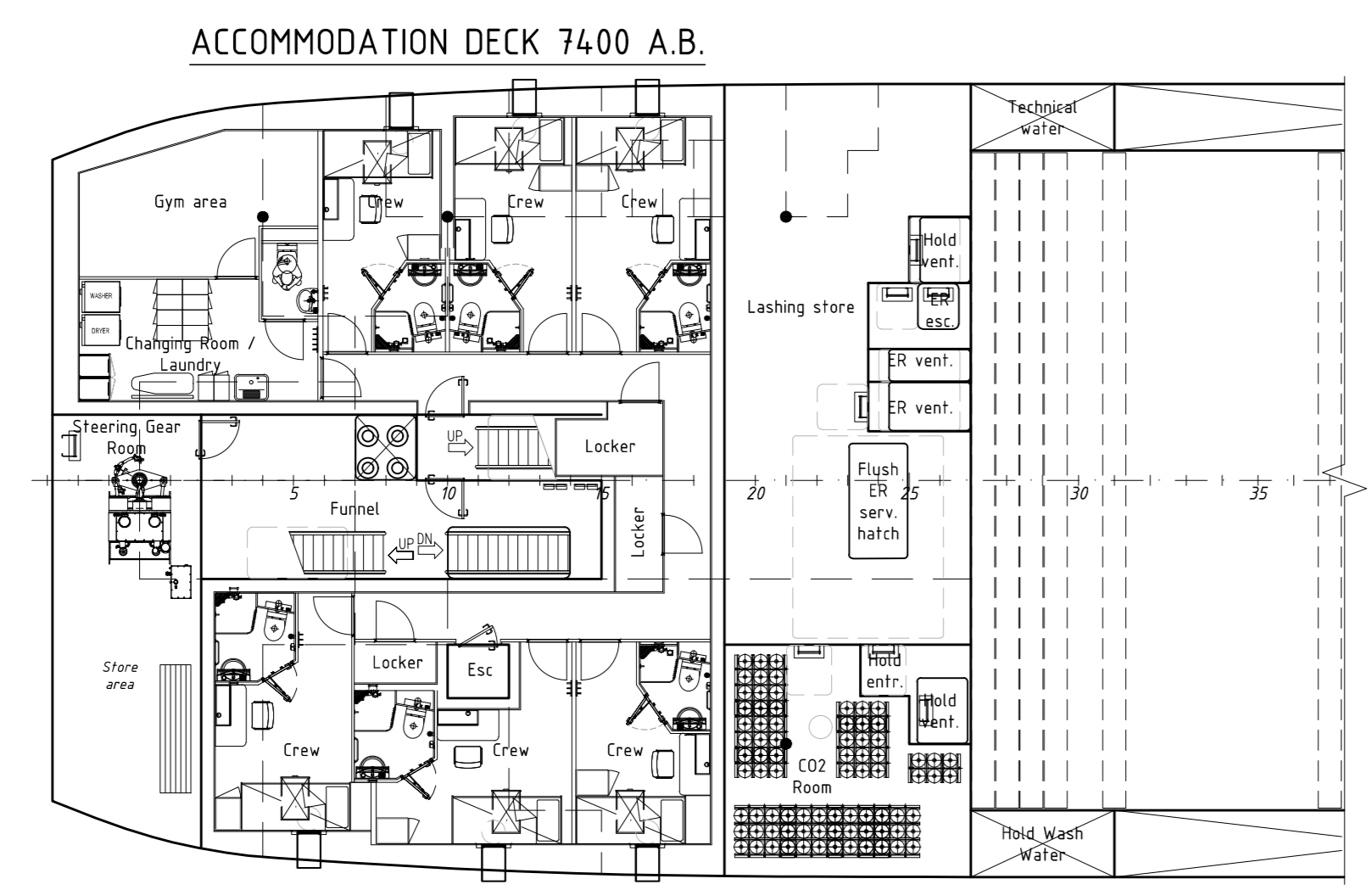
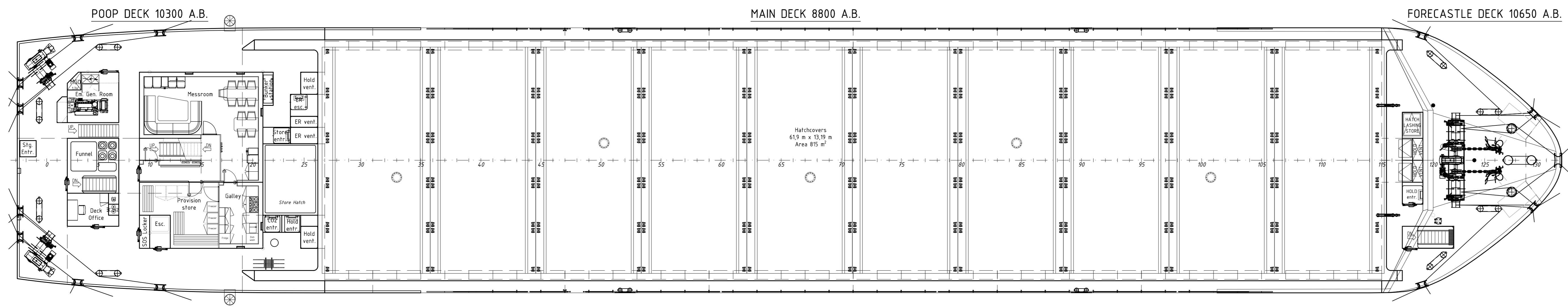
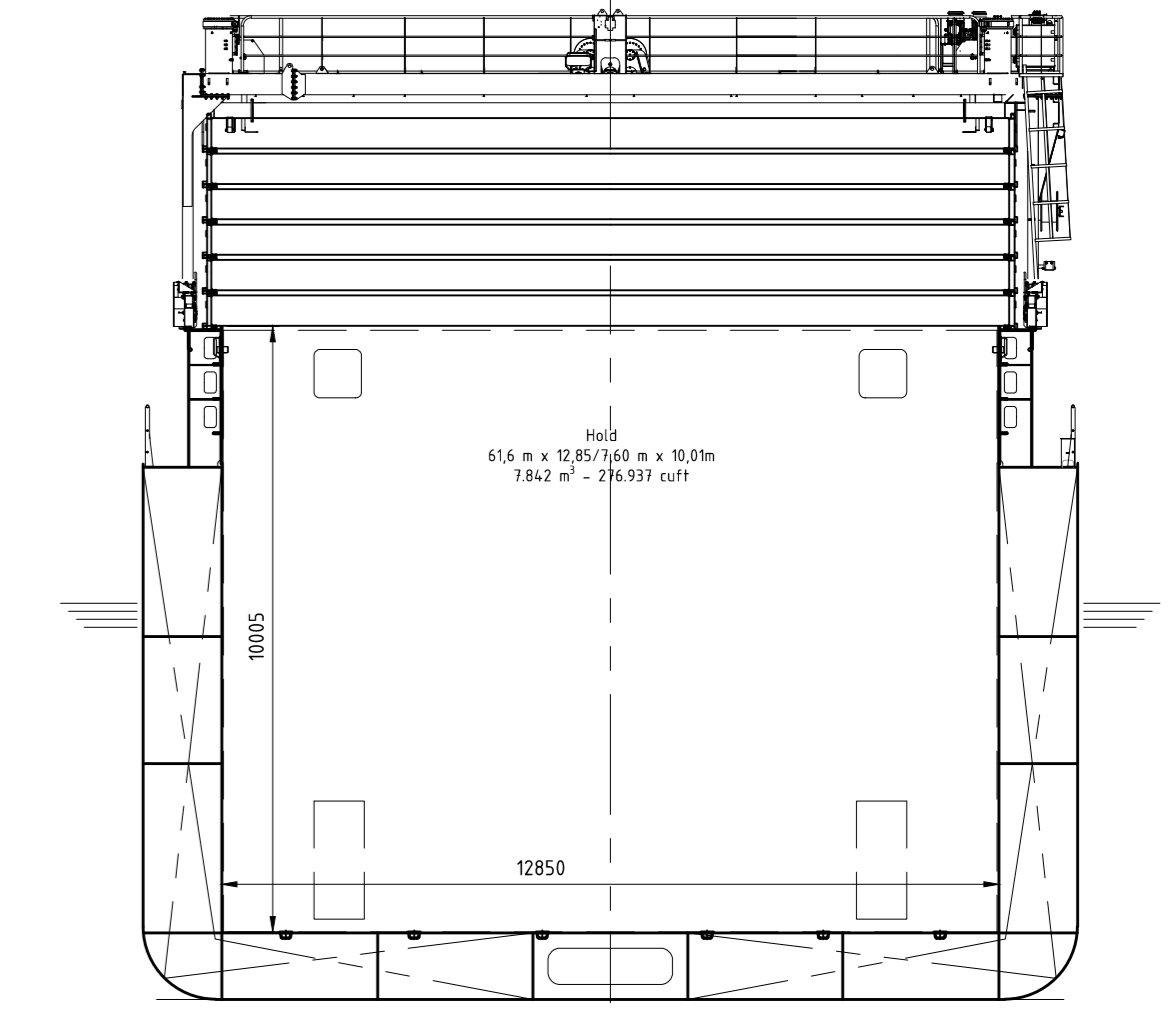


Rev.	Date	Description	Revision List
M	2024.08.06	Update mooring & anchoring forecasts	
N	2024.08.15	General update small items	
O	2024.10.15	General update & hullwork foreship	



MAIN CROSS SECTION



MAIN PARTICULARS

Length o.a.	89.98 m
Length p.p.	88.28 m
Rule Length	87.28 m
Breadth mid.	15.45 m
Depth	8.80 m
Draught summer mld.	6.55 m
Draught scantling mld.	6.55 m
Deadweight @ 6,55m	ca. 5.600 tdw
Hold capacity	7.842 m ³
-	276.937 cuft
Tanktop loading	15 ton/m ²

Tank capacities:	
Ballast	2290 m ³
Fuel (bunkers) approx.	121 m ³
Fuel (day&settl.) approx.	24 m ³
Urea	11 m ³
Lub. oil approx.	3x 1.8 m ³
Potable water	4.8 m ³
Technical water	26 m ³
Sewage	17 m ³
Dirty oil	18 m ³
Bilge water coll.	18 m ³

GT	ca. 4.154
NT	ca. 2.081

CLASSIFICATION

Bureau Veritas | #HULL #MACH
 General Cargo Ship
 Occasional Dry Bulk Cargo
 Heavy cargo [15 t/m²]
 Unrestricted navigation
 #AUT-UMS
 CleanShip, Grabloading
 Inwatersurvey, MON-SHAFT
 Nautical service: GNDS-A3
 Flag: Dutch Shipping Inspectorate

Format: A0	Scale: 1:125	Project: 17360 - GADUS
Created: EA 2024-03-18	Checked: EA 2024-10-15	Hull: SERIES
Modified: EA 2024-10-15	Title: General Arrangement	Rev: O
Doc. no.	W:\Work in Progress\F&E\For Approval_RD_Released Documents_RS_Released Studies	Sheet: 17 1