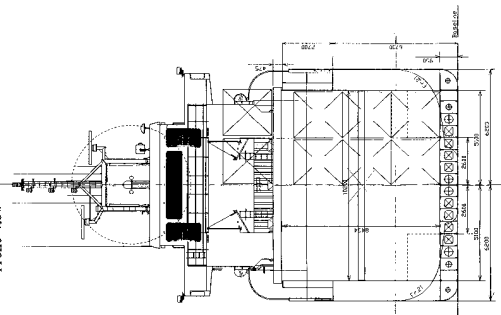


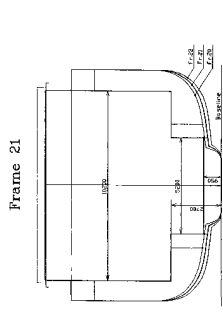
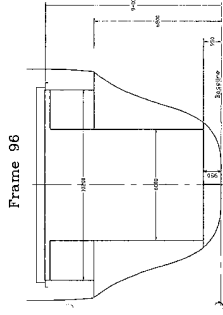
PS SAIMAX 3200 TON MULTIPURPOSE VESSEL

General Arrangement

Front view



REPORT NO. 1001
 DESIGNED BY: [Name]
 DRAWN BY: [Name]
 CHECKED BY: [Name]
 APPROVED BY: [Name]
 DATE: [Date]
 SCALE: 1:100
 SHEET NO. 1001



MAIN PARTICULARS	
Length over all	82.50 m
Length between perpendiculars	78.50 m
Breadth moulded	12.40 m
Depth	5.70 m
Displacement	3200 T
Deadweight	3200 T
100% capacity	est. 4740 GJ
Tank capacities	est. 1000 m ³
Powerplant	est. 1000 kW
Propeller	est. 2.0 m
Container capacity	est. 50 TEU
Engine	MAN 12 EU
Class	est. 5335 GT
Registered Office: Copenhagen, Denmark	
Builder: SAIMAX 3200 T	

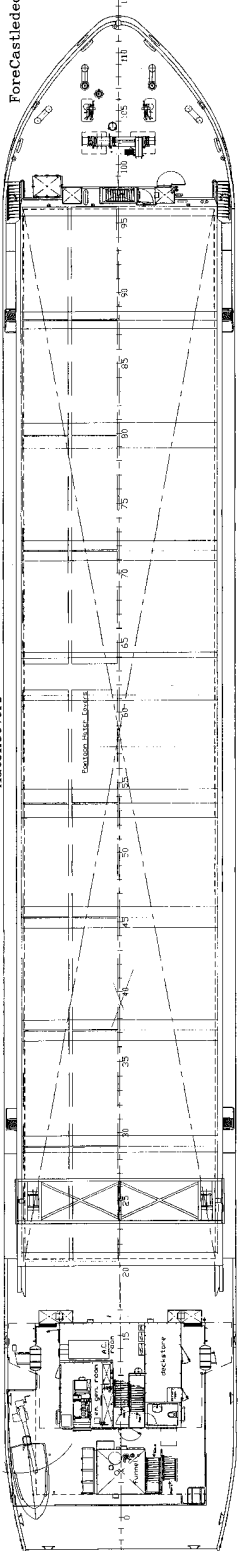
PS PATTJE SAIMAX

Member of the Vahrding Group

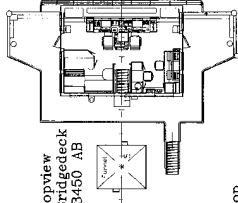
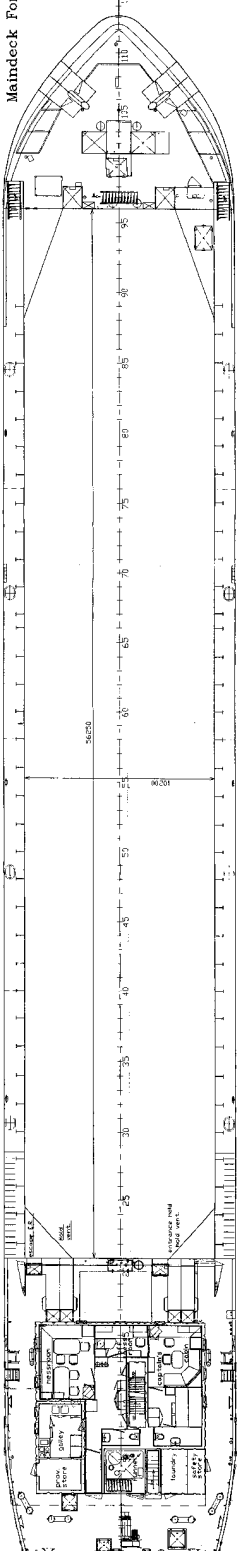
Project: Saimax 3200
 Date: 2-10-77
 Scale: 1:100
 Drawing: 1001

GENERAL ARRANGEMENT

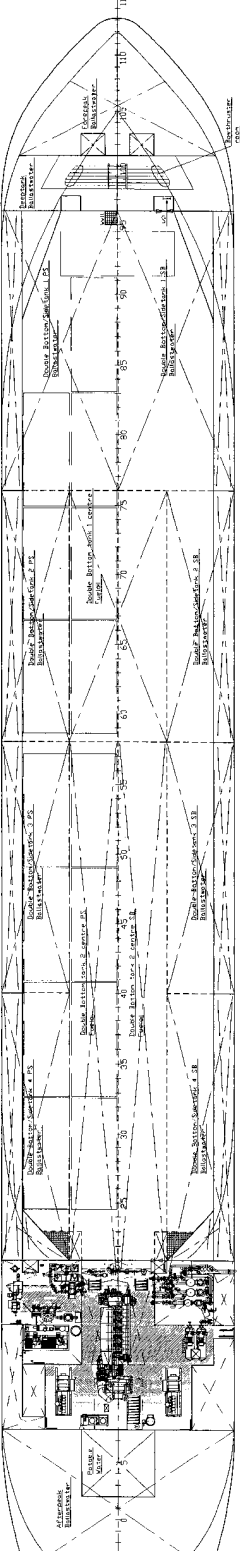
ForeCastledeck



Maindeck



Tanktop



Topview
 Boatdeck
 10900 AB

Topview
 Poopdeck
 8100 AB

Topview
 Tweendeck
 5300 AB

Aft Ship
 several
 levels